

# RIVETKING® ABS SERIES • ALUMINUM/STEEL RIVETS • OPEN END

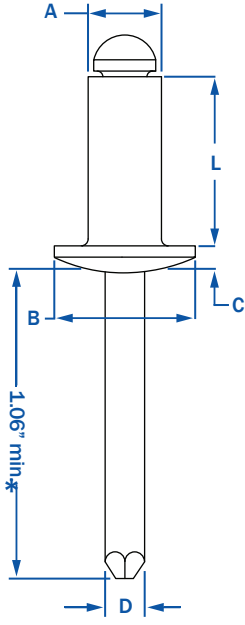
RIVET: 5056 ALUMINUM • MANDREL: STEEL PHOSPHATED - RIVET: 5052 ALUMINUM • MANDREL: STEEL ZINC PLATED

ALUMINUM/STEEL RIVETS ARE OFFERED IN TWO CONFIGURATIONS. CELUS® BRAND, 5056 ALUMINUM WITH STEEL PHOSPHATED MANDREL AND RIVETKING® BRAND 5052 ALUMINUM WITH STEEL ZINC PLATED MANDREL. Phosphated mandrels reduce rivet gun jaw cleaning, while zinc plated mandrels provide for greater rust protection. The aluminum rivet body is bright polished to protect from oxidation. The ABS series is ranked #4 in shear and tensile strength in the standard open end rivet category.



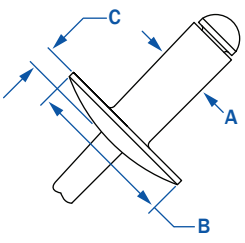
STANDARD BLIND RIVETS

STANDARD FLANGE-DOME HEAD



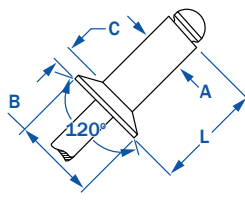
DIA.	PART NUMBER	GRIP RANGE	RIVET LENGTH	HEAD DIA.	HEAD HEIGHT	MANDREL DIA.	HOLE SIZE (DRILL #)	STRENGTH		Wt. lbs/M
								SHEAR	TENSILE	
3/32"	ABS - 32	.020 - .125	.250	.188	.032	.057	.097 - .100 (#41)	90	120	1.30
	ABS - 34	.126 - .250	.375					[70]	[80]	1.30
	ABS - 41	.020 - .062	.212					2.50		
	ABS - 42	.063 - .125	.275					2.50		
	ABS - 43	.126 - .187	.337					2.60		
	ABS - 44	.188 - .250	.400					2.70		
1/8"	ABS - 45	.251 - .312	.462	.250	.040	.076	.129 - .133 (#30)	170	220	2.70
	ABS - 46	.313 - .375	.525					[120]	[150]	2.80
	ABS - 48	.376 - .500	.650					3.10		
	ABS - 410	.501 - .625	.775					3.10		
	ABS - 412	.626 - .750	.900							
	ABS - 52	.020 - .125	.300					4.25		
5/32"	ABS - 53	.126 - .187	.362	.312	.050	.095	.160 - .164 (#20)	260	350	4.25
	ABS - 54	.188 - .250	.425					[190]	[230]	4.38
	ABS - 56	.251 - .375	.550					5.17		
	ABS - 58	.376 - .500	.675					5.17		
	ABS - 62	.020 - .125	.325					6.20		
	ABS - 63	.126 - .187	.387							
3/16"	ABS - 64	.188 - .250	.450	.375	.060	.114	.192 - .196 (#11)	380	500	7.00
	ABS - 66	.251 - .375	.575					[260]	[320]	7.20
	ABS - 68	.376 - .500	.700					7.75		
	ABS - 610	.501 - .625	.825					8.75		
	ABS - 612	.626 - .750	.950					9.00		
	ABS - 614	.751 - .875	1.075							
1/4"	ABS - 616	.876 - 1.00	1.200	.500	.080	.151	.257 - .261 (F)	700	920	10.33
	ABS - 84	.020 - .250	.500					[460]	[560]	13.50
	ABS - 86	.251 - .375	.625					14.00		
	ABS - 88	.376 - .500	.750					15.00		
	ABS - 810	.501 - .625	.875					16.00		
	ABS - 812	.626 - .750	1.000					16.00		
ABS - 814	.751 - .875	1.125	21.00							
ABS - 816	.876 - 1.00	1.250	21.00							

LARGE FLANGE



1/8"	ABS - 42LF	.063 - .125	.275	.375	.065	.076	.129 - .133 (#30)	170	220	2.60
	ABS - 43LF	.126 - .187	.337					[120]	[150]	2.70
	ABS - 44LF	.188 - .250	.400					2.70		
	ABS - 46LF	.313 - .375	.525					3.25		
	ABS - 48LF	.376 - .500	.650							
	ABS - 52LF	.020 - .125	.300							
5/32"	ABS - 54LF	.188 - .250	.425	.468	.075	.095	.160 - .164 (#20)	260	350	5.00
	ABS - 56LF	.251 - .375	.550					[190]	[230]	
	ABS - 62LF	.020 - .125	.325							
	ABS - 64LF	.188 - .250	.450					8.00		
	ABS - 66LF	.251 - .375	.575					9.00		
	ABS - 68LF	.376 - .500	.700					9.33		
3/16"	ABS - 610LF	.501 - .625	.825	.625	.092	.114	.192 - .196 (#11)	380	500	10.50
	ABS - 612LF	.626 - .750	.950					[260]	[320]	10.50
	ABS - 614LF	.751 - .875	1.075					11.50		
	ABS - 616LF	.876 - 1.00	1.200					12.00		
	ABS - 88LF	.376 - .500	.750					700	920	
	ABS - 816LF	.876 - 1.00	1.200					[460]	[560]	

COUNTERSUNK



1/8"	ACS - 42	.063 - .125	.275	.220	.031	.076	.129 - .133 (#30)	170	220	2.60
	ACS - 43	.126 - .187	.337					[120]	[150]	2.60
	ACS - 44	.188 - .250	.400					2.70		
5/32"	ACS - 54	.188 - .250	.425	.281	.040	.095	.160 - .164	260	350	4.13
3/16"	ACS - 64	.188 - .250	.450	.350	.050	.114	.192 - .196 (#11)	380	500	6.40
	ACS - 66	.251 - .375	.575					[260]	[320]	7.40

\* 1/4" DIAMETER RIVETS HAVE A 1.250 MANDREL LENGTH MINIMUM.

\*\* CELUS® 5056 ALUMINUM/STEEL PHOSPHATED ARE PER IFI 114 GRADE 19 AND DO NOT HAVE A SUFFIX

\*\*\* RIVETKING® 5052 ALUMINUM/STEEL ZINC PLATED ARE PER IFI 114 GRADE 18 ARE IN BRACKETED ABOVE AND HAVE /IR AS THE SUFFIX

