

RIVETKING® SBS SERIES • ALL STEEL BLIND RIVETS • OPEN END

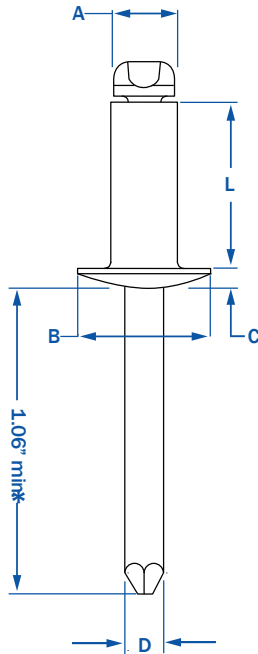
RIVET: STEEL TRIVALENT ZINC PLATED • MANDREL: STEEL TRIVALENT ZINC PLATED

STANDARD BLIND RIVETS

RIVETKING®/CELUS® STEEL/STEEL BLIND RIVETS ARE EQUIPPED WITH PITCHED MANDREL DESIGN THAT IS ENVELOPED BY THE RIVET DURING APPLICATION TO PREVENT MANDREL FALLOUT. Offered in two configurations, RivetKing® Brand All Steel Zinc Plated or Celus® Brand, Steel with Phosphate mandrel. Phosphated mandrels reduce rivet gun jaw cleaning, while zinc plated mandrels provide for greater rust protection. The SBS series is ranked #3 in both shear and tensile strength in the open end blind rivet category. Per IFI -114 Grade 30

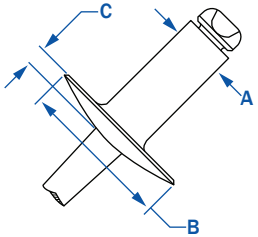


STANDARD FLANGE-DOME HEAD

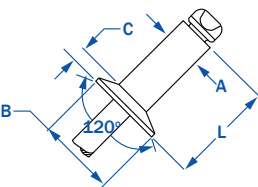


DIA.	PART NUMBER	GRIP RANGE	RIVET LENGTH	HEAD DIA.	HEAD HEIGHT	MANDREL DIA.	HOLE SIZE (DRILL #)	STRENGTH		Wt. lbs/M							
								SHEAR	TENSILE								
3/32"	SBS - 32	.020 - .125	.250	.188	.032	.057	.097 - .100 (#41)	130	170	1.50							
	SBS - 34	.126 - .250	.375							1.70							
	SBS - 41	.020 - .062	.212							2.80							
	SBS - 42	.063 - .125	.275							2.90							
1/8"	SBS - 43	.126 - .187	.337	.250	.040	.076	.129 - .133 (#30)	260	310	3.10							
	SBS - 44	.188 - .250	.400							3.30							
	SBS - 45	.251 - .312	.462							3.60							
	SBS - 46	.313 - .375	.525							3.70							
	SBS - 48	.376 - .500	.650							3.70							
	SBS - 410	.501 - .625	.775							4.78							
5/32"	SBS - 52	.020 - .125	.300	.312	.050	.095	.160 - .164 (#20)	370	470	5.13							
	SBS - 53	.126 - .187	.362							5.25							
	SBS - 54	.188 - .250	.425							5.50							
	SBS - 56	.251 - .375	.550							6.67							
3/16"	SBS - 58	.376 - .500	.675	.375	.060	.114	.192 - .196 (#11)	540	680	6.83							
	SBS - 62	.020 - .125	.325							7.80							
	SBS - 63	.126 - .187	.387							8.20							
	SBS - 64	.188 - .250	.450							8.60							
	SBS - 66	.251 - .375	.575							9.40							
	SBS - 68	.376 - .500	.700							10.75							
	SBS - 610	.501 - .625	.825							11.75							
	SBS - 612	.626 - .750	.950							11.75							
1/4"	SBS - 614	.751 - .875	1.075	.500	.080	.151	.257 - .261 (F)	1000	1240	14.33							
	SBS - 616	.876 - 1.00	1.200							14.67							
	SBS - 84	.020 - .250	.500							16.50							
	SBS - 86	.251 - .375	.625							17.50							
	SBS - 88	.376 - .500	.750							19.00							
	SBS - 810	.501 - .625	.875							23.00							
1/8"	SBS - 812	.626 - .750	1.000	.375	.065	.076	.129 - .133 (#30)	260	310	24.50							
	SBS - 814	.751 - .875	1.125							27.00							
	SBS - 816	.876 - 1.00	1.250							28.00							
	5/32"	SBS - 42LF	.063 - .125							.275	.468	.075	.095	.160 - .164 (#20)	370	470	3.30
		SBS - 43LF	.126 - .187							.337							3.50
		SBS - 44LF	.188 - .250							.400							3.60
		SBS - 46LF	.313 - .375							.525							4.63
	3/16"	SBS - 48LF	.376 - .500							.650	.625	.092	.114	.192 - .196 (#11)	540	680	4.63
		SBS - 52LF	.020 - .125							.300							12.67
		SBS - 54LF	.188 - .250							.425							13.33
		SBS - 56LF	.251 - .375							.550							14.67
	1/4"	SBS - 62LF	.020 - .125							.325	.750	1.07	.151	.257 - .261	1000	1240	16.00
SBS - 64LF		.188 - .250	.450	16.00													
SBS - 66LF		.251 - .375	.575	17.00													
SBS - 68LF		.376 - .500	.700	18.00													
1/8"	SBS - 610LF	.501 - .625	.825	.220	.031	.076	.129 - .133 (#30)	260	310	16.00							
	SBS - 612LF	.626 - .750	.950							16.00							
	SBS - 614LF	.751 - .875	1.075							17.00							
	SBS - 616LF	.876 - 1.00	1.200							18.00							
	SBS - 88LF	.376 - .500	.750							18.00							
	5/32"	SCS - 42	.063 - .125							.275	.281	.040	.095	.160 - .164	370	470	3.00
SCS - 43		.126 - .187	.337	3.10													
SCS - 44		.188 - .250	.400	3.30													
SCS - 54		.188 - .250	.425	5.25													
3/16"	SCS - 64	.188 - .250	.450	.350	.050	.114	.192 - .196 (#11)	540	680	8.20							
	SCS - 66	.251 - .375	.575							9.60							

LARGE FLANGE



COUNTERSUNK



* 1/4" DIAMETER RIVETS HAVE A 1.250 MANDREL LENGTH MINIMUM.
 ** CELUS® STEEL ZINC PLATED RIVET / PHOSPHATED MANDREL DO NOT HAVE A SUFFIX (SPECIAL ORDER)
 *** RIVETKING® STEEL ZINC PLATED RIVET / ZINC PLATED MANDREL HAVE /IR AS A SUFFIX (STOCK)



Call Rivet USA (a division of Cardinal Components) to Order or for Quote

800-236-3200 | info@cardinalcomponents.com | www.rivetusa.com