

The variants – thread inserts for expansion anchoring **EXPANSIONSERT 1**



Your advantages

- Universal thread insert for thermoset and thermoplastic components
- High-strength threads by expansion anchoring
- Quick, cost-effective installation

The principle

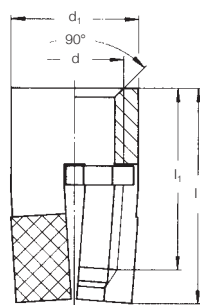
The EXPANSIONSERT 1 thread insert consists of a cross-slotted basic body with an internal thread, which has an external diamond knurl, and an expanding plate. When the thread insert is installed in the mounting hole, the diamond knurl part is expanded by the expanding plate which is pressed down. As a result, it is anchored in the wall of the hole. The EXPANSIONSERT 1 had been especially developed for the use in blind holes.



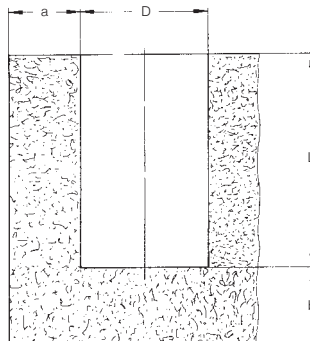
Technical data

Material: **brass CuZn38Pb2** (compliant with EU 2000/53) / **brass CuZn39Pb3**.

Type 0230 EXPANSIONSERT 1 Standard



Mounting hole^①



For installation tools and machines, please see pages 48–49

d	Item code	d ₁	l	l _{1 min.}	D ^{+0.1①}	L	a _{min.}	b _{min.}
M 2.5	0230 025 0065	4.0	6.5	4.0	4.0	6.5	2.4	3.2
M 3	0230 903 0001	4.0	6.5	4.0	4.0	6.5	2.4	3.2
	0230 003 0065	4.8	6.5	4.0	4.8	6.5	2.9	3.2
M 3.5	0230 035 0008	4.8	8.0	5.0	4.8	8.0	2.9	4.0
M 4	0230 004 0095	5.5	9.5	6.5	5.5	9.5	3.3	4.7
	0230 004 0008	5.5	8.0	5.0	5.5	8.0	3.3	4.0
M 5	0230 005 0011	6.5	11.0	7.5	6.5	11.0	3.9	5.5
	0230 005 0008	6.5	8.0	4.5	6.5	8.0	3.9	4.0
M 6	0230 006 0125	8.0	12.5	8.5	8.0	12.5	4.8	6.2
M 8	0230 008 0016	11.0	16.0	11.0	11.0	16.0	6.6	8.0

Metric ISO thread according to DIN 13-6H. Technical changes reserved. Minimum quantity on request. All measures in mm.

^① Guideline values: depend on the moulding material, may have to be changed after installation tests.

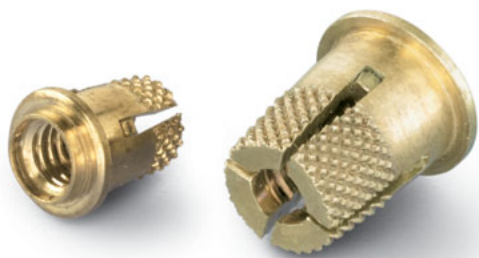
Other sizes and special designs on request.

Sales@RivetNutUSA.com

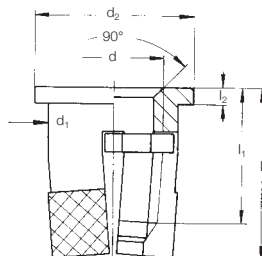
ISO 9001 CERTIFIED
www.RivetNutUSA.com

(800) 236-3200

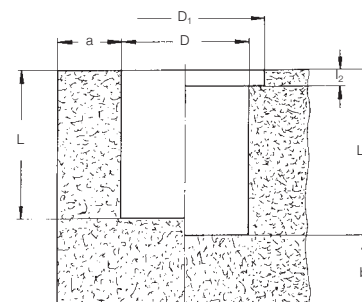
Request your quote with Rivet Nut USA (an operating division of Cardinal Components, Inc.)
Cardinal Components, Inc. is your authorized preferred specialty fastener distributor.



Type 0231[®]
EXPANSIONINSERT 1 flange



Mounting hole[®]



Technical data

For installation tools, see page 48

d	Item code	l	d ₁	d ₂	l _{1 min.}	l ₂	D ^{+0.1} ₁	D ^{+0.2} ₁	L	L ₁	a _{min.}	b _{min.}
M 2.5	0231 025 0006	6.0	4.0	5.5	3.6	0.8	4.0	5.5	5.2	6.0	2.4	3.2
M 3	0231 003 0006	6.0	4.8	6.3	3.5	0.8	4.8	6.3	5.2	6.0	2.9	3.2
M 3.5	0231 035 0075	7.5	4.8	6.3	4.7	0.8	4.8	6.3	6.7	7.5	2.9	4.0
M 4	0231 004 0075	7.5	5.5	7.0	4.4	0.8	5.5	7.0	6.7	7.5	3.3	4.7
M 5	0231 005 0085	8.5	6.5	8.0	5.0	0.8	6.5	8.0	7.7	8.5	3.9	5.5
M 6	0231 006 0011	11.0	8.0	10.0	7.0	0.8	8.0	10.0	10.2	11.0	4.8	6.2

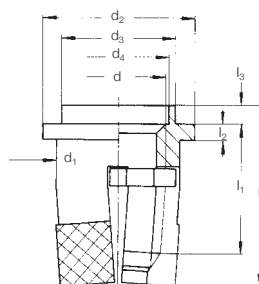
Metric ISO thread according to DIN 13-6H. Delivery conditions according to DIN 267. Technical changes reserved. Minimum quantity on request.

[®] Guideline values: depend on the moulding material, may have to be changed after installation tests.

The flange has a large contact surface and thus reduces the surface pressure.

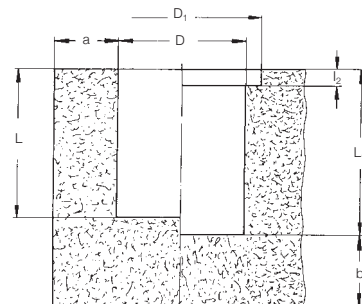
Other sizes and special designs on request.

Type 0232
EXPANSIONINSERT 1 Clinch



The flanged edge is designed to fasten contact components and cable eyes as well as to serve as a fixing aid for a cover part to be applied.

Mounting hole[®]
(dimensions as type 0231)



For installation tools see page 48

d	Item code	l	d ₁	d ₂	d _{3 max.}	d ₄	D ^{+0.1} ₁	D ^{+0.2} ₁	l _{1 min.}	l ₂	l ₃
M 2.5	0232 025 0007	7.0	4.0	5.5	3.6	2.8	4.0	5.5	3.6	0.8	1.0
M 3	0232 003 0007	7.0	4.8	6.3	4.1	3.3	4.8	6.3	3.5	0.8	1.0
M 3.5	0232 035 0085	8.5	4.8	6.3	4.6	3.8	4.8	6.3	4.7	0.8	1.0
M 4	0232 004 0085	8.5	5.5	7.0	5.1	4.3	5.5	7.0	4.4	0.8	1.0
M 5	0232 005 0095	9.5	6.5	8.0	6.1	5.3	6.5	8.0	5.0	0.8	1.0
M 6	0232 006 0012	12.0	8.0	10.0	7.1	6.3	8.0	10.0	7.0	0.8	1.0

Metric ISO thread according to DIN 13-6H. Technical changes reserved. Minimum quantity on request. All measures in mm.

[®] Guideline values: depend on the moulding material, may have to be changed after installation tests.

Other sizes and special designs on request.

Sales@RivetNutUSA.com

ISO 9001 CERTIFIED
www.RivetNutUSA.com

(800) 236-3200

Request your quote with Rivet Nut USA (an operating division of Cardinal Components, Inc.)
Cardinal Components, Inc. is your authorized preferred specialty fastener distributor.