

The variants – thread inserts for expansion anchoring **EXPANSIONCERT 2**

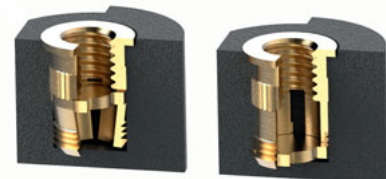


Your advantages

- For reactive resins, PUR, elastomers, integral hard foams as well as for wood composite materials
- Wear-resistant threads
- Quick, cost-effective installation

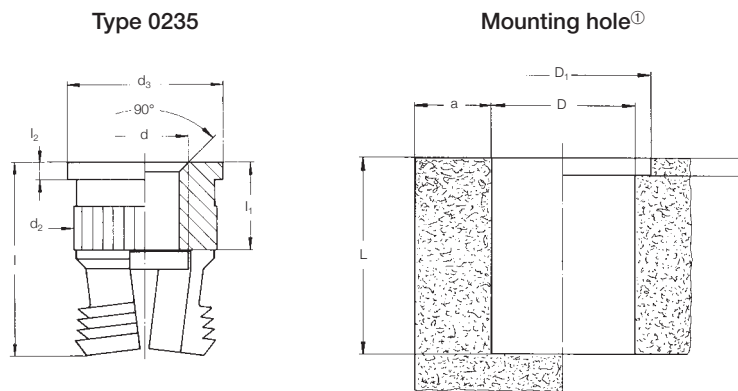
The principle

The EXPANSIONCERT 2 thread insert consists of a body with an internal thread, which has knurls and undercuts on the circumferential surface. Inside the body, there is an expanding plate that is pressed down when the thread insert is installed in the mounting hole. Upon installation, the slotted bottom part of the EXPANSIONCERT 2 is expanded and its cutting rings are anchored in the wall of the mounting hole. The thread insert is thus reliably locked against pull-out and screwing. The EXPANSIONCERT 2 had been especially developed for the use in blind holes.



Technical data

Material: steel 1.0718 11 SMnPb 30 galvanised, chromated or **brass CuZn38Pb2** (compliant with EU 2000/53) / **brass CuZn39Pb3**.



For installation tools and machines, please see pages 48–49

d	Item code	l	d ₂	d ₃	l ₁	l ₂	D ^{+0.1①}	D ₁	L _{min.}	a _{min.}
M 3	0235 103 0008	8.0	5.9	7.0	3.0	0.8	5.5	7.2	8.2	4.0
M 3.5	0235 135 0008	8.0	5.9	7.0	3.5	0.8	5.5	7.2	8.2	4.0
M 4	0235 104 0095	9.5	6.9	8.0	4.0	0.8	6.5	8.2	9.8	5.0
M 5	0235 105 0011	11.0	8.4	10.0	5.0	0.8	8.0	10.2	11.3	6.0
M 6	0235 106 0125	12.5	8.4	10.0	6.0	0.8	8.0	10.2	12.8	6.0

Metric ISO thread according to DIN 13-6H. Technical changes reserved. Minimum quantity on request. All measures in mm.

① Guideline values: depend on the moulding material, may have to be changed after installation tests.

Other sizes and special designs on request.

Sales@RivetNutUSA.com

Request your quote with Rivet Nut USA (an operating division of Cardinal Components, Inc.)
Cardinal Components, Inc. is your authorized preferred specialty fastener distributor.

ISO 9001 CERTIFIED
www.RivetNutUSA.com
(800) 236-3200