

# The variants – thread inserts for self-tapping insertion **QUICKSERT® Hex**



## Your advantages

- Process-reliable and efficient installation with additional driver shape – hexagon socket
- For thermoplastics and thermosets
- Extra small flank angles of the special external thread minimise radial tensions
- High-strength and torsion-resistant threads
- Special version available with external left-hand thread for improved reverse locking

## The principle

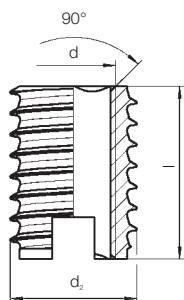
The QUICKSERT® Hex consists of a cylindrical basic body with an internal thread and a shaped hexagon as well as a special external thread.

The profile of the external thread has an extremely small flank angle and expands asymmetrically toward the thread root. The installation with low driving torques is therefore optimised. A high interference fit is achieved with an ideal distribution of load. The bottom part of the bush is provided with a cutting slot. For special requirements, we offer a version with flange. The threaded bush is plugged on and screwed in with a rotating spindle. It is not necessary to screw out the spindle.

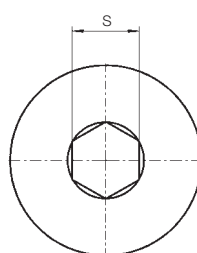
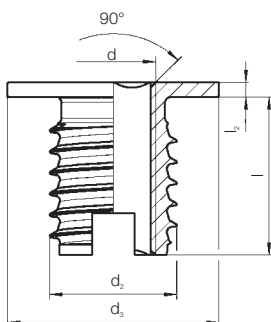
## Technical data

Material: **brass CuZn38Pb2** (compliant with EU 2000/53) / **brass CuZn39Pb3** or steel 1.0718 11SMnPb30 galvanised, chromated.

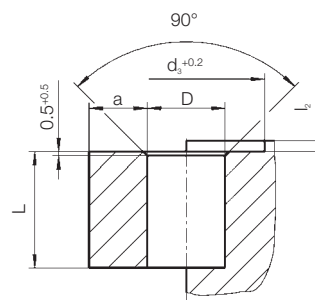
Type 1437



Type 1438



Mounting hole



The flange version has a large contact surface and thus reduces the surface pressure.

For installation tools and machines, please see pages 33–35

d	Brass, standard item code	Brass, flange item code	l	l <sub>2</sub>	d <sub>2</sub>	d <sub>3</sub>	L <sub>min.</sub>	a <sub>min.</sub>	S
M 4	1437 504 0008	1438 504 0009	8.0	1.0	7.0	10.0	9.0	3.0	3.2
M 5	1437 505 0010	1438 505 0112	10.0	1.2	8.0	11.0	11.0	4.0	4.0
M 6	1437 506 0014	1438 506 0154	14.0	1.4	10.0	13.0	15.0	4.0	5.0
M 8	1437 508 0016	1438 508 0164	15.0	1.4	12.0	15.0	16.0	5.0	6.5

Minimum quantity on request.

All measures in mm. Metric ISO thread according to DIN 13-6H.

Technical changes reserved.

## Recommended mounting holes – diameter in mm – for QUICKSERT® in different materials

	M 4	M 5	M 6	M 8
PE (soft), PP	5.6	6.6	8.1	10.1
PA 6, PA 6.6, PBT, PE (hard), PET, POM	5.8	6.8	8.3	10.3
ASA, SAN	6.0	7.0	8.5	10.5
ABS, PA 6 GF 30 %, PBT GF 30 %, PET GF 30 %, PS, PVC (hard)	6.2	7.2	8.7	10.7
PA 6.6 GF 30 %, PC, PC GF 30 %, PPE (GF 30 %), PPS (GF 30 %)	6.4	7.4	9.0	11.0
SMC, ZMC, BMT	6.6	7.6	9.4	11.4

**Sales@RivetNutUSA.com**

**ISO 9001 CERTIFIED**  
**www.RivetNutUSA.com**

**(800) 236-3200**

Request your quote with Rivet Nut USA (an operating division of Cardinal Components, Inc.)  
Cardinal Components, Inc. is your authorized preferred specialty fastener distributor.