

QUICKSERT® Expansion type 1230



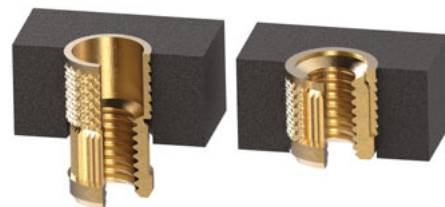
Your advantages

- No tapping
- Quick, cost-effective installation
- Chipless installation in smooth mounting holes
- High-strength threads also in light metals
- High-strength threads in thermoplastic and thermoset components** after demoulding the components
- Suited for one-sided accessibility of the installation point
- For screw joints reusable as often as required
- For installation on finished surfaces

The principle

The QUICKSERT® Expansion type 1230 is spun on to the rotating threaded mandrel of the installation tool and introduced into the mounting hole.

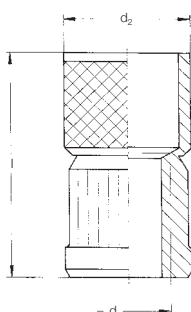
The hole can be preformed or machined with common drills as a blind or through hole. Through the axial pulling motion of the threaded mandrel in the installation tool, the QUICKSERT® Expansion shears at the predetermined breaking point between the anchoring sleeve and the threaded bush. The threaded bush is pulled into the anchoring sleeve and expands it. Meanwhile, the diamond knurl of the anchoring sleeve is pressed into the wall of the hole. The thread insert is now anchored and locked against screwing and pull-out.



Technical data

Material: **brass CuZn38Pb2** (compliant with EU 2000/53) / **brass CuZn39Pb3** or steel 1.0718 11SMnPb30+c
surface: A2J ISO 4042 Cr(VI)-free (aluminium materials on request)

Type 1230



Mounting hole^①



Sales@RivetNutUSA.com

Request your quote with Rivet Nut USA (an operating division of Cardinal Components, Inc.)
Cardinal Components, Inc. is your authorized preferred specialty fastener distributor.

ISO 9001 CERTIFIED
www.RivetNutUSA.com
(800) 236-3200

For installation tools and machines, please see pages 48–49

d	Steel item code	Brass item code	Total length l	Total length installed l ₁	Knurl ø d ₂	Mounting hole			
						D _{+0.1} ①	L _{min}	a _{2min}	a
M 3	1230 003 0048	1230 103 0048	8.0	4.8	5.5	5.5	8.8	4.8	2.0
M 4	1230 004 0063	1230 104 0063	10.5	6.3	6.5	6.5	11.8	6.3	2.0
M 5	1230 005 0082	1230 105 0082	13.5	8.2	7.5	7.5	15.2	8.2	2.5
M 6	1230 006 0098	1230 106 0098	16.0	9.8	9.0	9.0	18.8	9.8	3.0
M 8	1230 008 0115	1230 108 0115	19.0	11.5	12.0	12.0	21.0	11.5	4.0

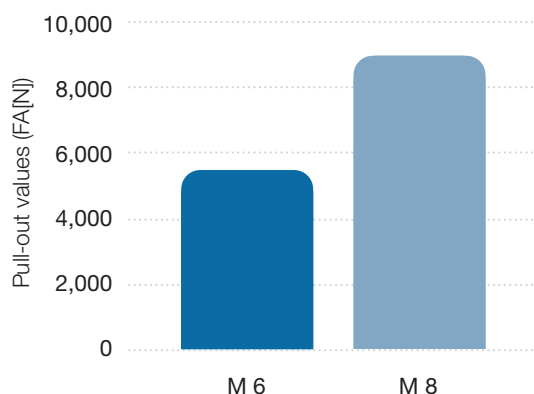
Minimum quantity on request. All measures in mm.

For the installation into plastics, we recommend brass thread inserts. Special lengths and thread diameters as well as other materials on request.

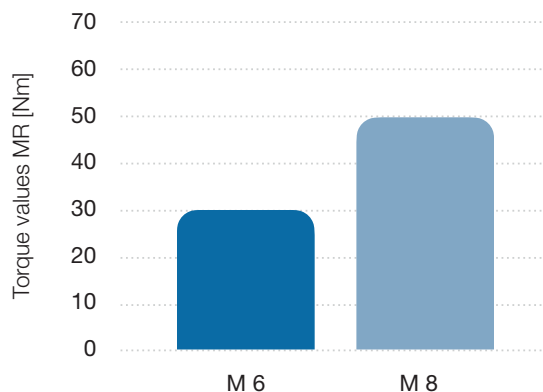
① Guideline values: depend on the moulding material, may have to be changed after installation tests.

** When this insert is to be used with plastics susceptible to stress cracks (e.g. PC, PPO), it must be particularly tested for suitability.

Pull-out values for QUICKSERT® Expansion type 1230 / M 6 and M 8 tested in PA 6.6 GF



Torque values for QUICKSERT® Expansion type 1230 / M 6 and M 8 tested in PA 6.6 GF



Sales@RivetNutUSA.com

Request your quote with Rivet Nut USA (an operating division of Cardinal Components, Inc.)
Cardinal Components, Inc. is your authorized preferred specialty fastener distributor.

ISO 9001 CERTIFIED
www.RivetNutUSA.com
(800) 236-3200