

Reduced thread profile and coarse pitch minimizes radial stress and potential hole wall damage. The coarse thread also maximizes the pull-out strength of these Self-Tapping Inserts.

### Series 10 Thread Forming



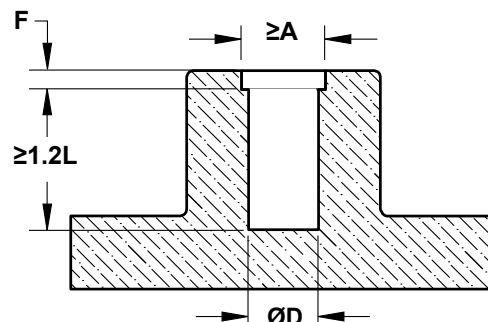
#### DIMENSIONAL DATA

#### LEGEND

Inch
Metric Conversion

Thread Size		A Outer Thread Ø		L Length		D* Rec. Hole Ø		F* Counterbore Depth	
Tolerance ►		Ref.		±.010	±0.26	+.003	+0.08	Ref.	
4-40	M3 x 0.5	.188	4.78	.250	6.35	.169	4.29	.042	1.07
6-32	M3.5 x 0.6	.219	5.56	.281	7.14	.199	5.05	.042	1.07
8-32	M4 x 0.7	.250	6.35	.312	7.92	.228	5.79	.050	1.27
10-24	M5 x 0.8	.281	7.14	.375	9.53	.250	6.35	.063	1.60
10-32	M5 x 0.8	.281	7.14	.375	9.53	.250	6.35	.063	1.60
1/4-20	M6 x 1.0	.344	8.74	.438	11.13	.312	7.92	.071	1.81

#### Recommended Hole Design\*



\* See page 5 for more information  
on recommended hole design

**To Order:** INS (Series #)/Thread Size / Length, Material, Finish

**Example:** INS 10/250-20 / .438 EK

**Sales@RivetNutUSA.com**

**ISO 9001 CERTIFIED**  
**www.RivetNutUSA.com**

Request your quote with Rivet Nut USA (an operating division of Cardinal Components, Inc.)  
Cardinal Components, Inc. is your authorized preferred specialty fastener distributor.

**(800) 236-3200**