

**SNAPLOC® couplings for plate fastenings**

Due to the geometry, these couplings may be mounted by simply being pushed into a specified bore or square opening.

The couplings can be assembled by pressing them easily into a mounting geometry. To simplify the assembly, we offer an installation tool.

Example: view of assembled condition

**SNAPLOC® angular coupling**

Partially, the insertion direction of the connection and the fastening level are not arranged to each other in a right angle.

Especially for the complex shaped parts with the free formed surfaces, it is not easy to generate these surfaces.

To compensate angular differences, we offer the angular couplings. These couplings are mounted as well as those for plate fastening into the sheet and compensate additionally the angular difference.

Thus, an assembly in insertion direction is again possible.

Available on request.



**Sales@RivetNutUSA.com**

*Request your quote with Rivet Nut USA (an operating division of Cardinal Components, Inc.)  
Cardinal Components, Inc. is your authorized preferred specialty fastener distributor.*

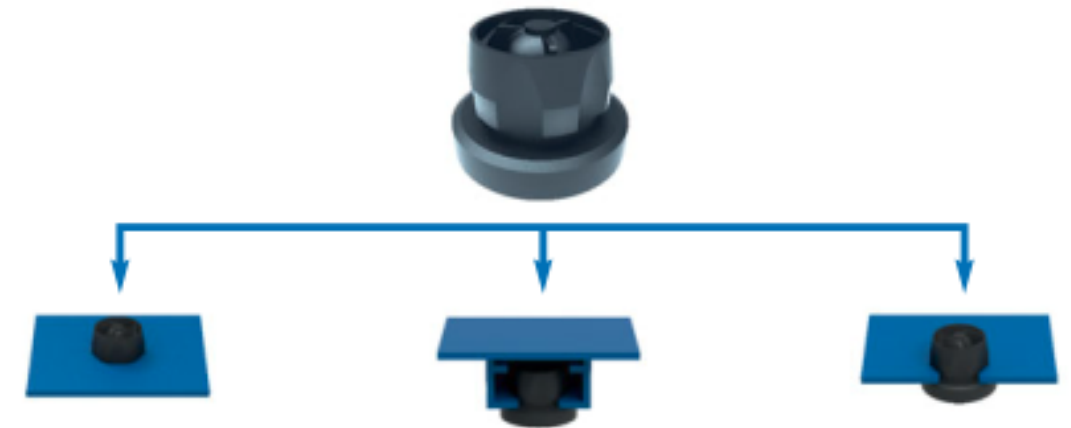
**ISO 9001 CERTIFIED**  
**www.RivetNutUSA.com**  
**(800) 236-3200**

**NEW**

### SNAPLOC® couplings with multi-retainer

Advantage of the universal mounting geometry: simply being pushed in axial direction or inserted from side into the mounting. Due to the new special part geometry of the couplings, new standards are set regarding the ease of assembly.

The benefit is the possible fastening in mounting domes (side insertion) as well as in plate fastenings (easy push-in).



### SNAPLOC® silicone couplings

Silicone couplings (VMQ) are used for applications with special requirements on temperature resistance. By the use of solid silicone, higher continuous operating temperatures (up to 180 °C) can be achieved compared to couplings made of thermoplastic elastomer or EPDM. Moreover, solid silicone couplings show constant material characteristic on the temperature range (see page 10).



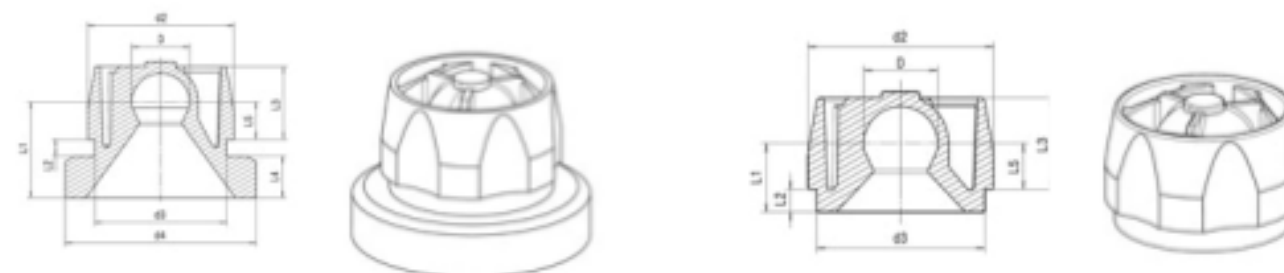
**Sales@RivetNutUSA.com**

*Request your quote with Rivet Nut USA (an operating division of Cardinal Components, Inc.)  
Cardinal Components, Inc. is your authorized preferred specialty fastener distributor.*

**ISO 9001 CERTIFIED**  
**www.RivetNutUSA.com**  
**(800) 236-3200**

**SNAPLOC®** Technical information

Couplings with multi-retainer



Part number	Design	Ball O D	Outer O d2	Mounting hole O d3	Collar O d4	Depth (to ball center L1)	Wall thickness L2	Mounted depth L3	Collar depth L4	Depth L5	Material	Shore hardness	Thread surface
4049 010 0034	collarless	10	24.5	22.1	-	9	2 - 3	12	-	6	EPDM peroxide	70 Shore A	black
4049 010 0035	collarless	10	24.5	22.1	-	9	2 - 3	12	-	6	VMQ	70 Shore A	black
4049 010 0036	collared	10	24.5	22.1	32	16	3	12.15	6.85	6.15	EPDM peroxide	70 Shore A	black
4049 010 0037	collared	10	24.5	22.1	32	16	3	12.15	6.85	6.15	VMQ	70 Shore A	black

**Sales@RivetNutUSA.com**

Request your quote with Rivet Nut USA (an operating division of Cardinal Components, Inc.)  
Cardinal Components, Inc. is your authorized preferred specialty fastener distributor.

**ISO 9001 CERTIFIED**  
**www.RivetNutUSA.com**  
**(800) 236-3200**

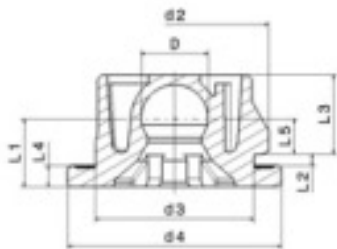
**Sales@RivetNutUSA.com**

Request your quote with Rivet Nut USA (an operating division of Cardinal Components, Inc.)  
Cardinal Components, Inc. is your authorized preferred specialty fastener distributor.

**ISO 9001 CERTIFIED**  
**www.RivetNutUSA.com**  
**(800) 236-3200**

**SNAPLOC®** Technical information

Couplings for plate fastening



Part number	Design	Ball Ø D	Outer Ø d2	Mounting hole Ø d3	Collar Ø d4	Depth (to ball center L1)	Wall thickness L2	Mounted depth L3	Collar depth L4	Depth L5	Material	Shore hardness	Thread surface
4070 070 4312	plate fastening	7	17	14	20	6.7	0.8 – 2	–	2.2	4.5 – L2	EPDM-X+PP	69 Shore A	black
4070 070 3012	plate fastening	7	17	14	20	6.7	0.8 – 2	–	2.2	4.5 – L2	EPDM-X+PP	78 Shore A	black
4070 070 1312	plate fastening	7	17	14	20	6.7	0.8 – 2	–	2.2	4.5 – L2	EPDM-X+PP	86 Shore A	black
0499 085 0006	plate fastening	7	11	10	14	7	0.9	–	2	4.1	EPDM-X+PP	78 Shore A	black
0499 085 0001	plate fastening	7	11	10	14	7	0.9	–	2	4.1	EPDM-X+PP	93 Shore A	black
4062 070 0310	plate fastening	7	11	10	14	8.2	1.5	–	2	4.7	EPDM-X+PP	78 Shore A	black
4060 007 0027	plate fastening	7	11	10	14	8.5	1.5	–	2.6	4.6	EPDM-X+PP	86 Shore A	black
4060 007 0026	plate fastening	7	11	10	14	8.2	2	–	2	4.2	EPDM-X+PP	38 Shore A	black
4060 070 4310	plate fastening	7	11.5	10	14	8.7	2	–	2.5	4.2	EPDM-X+PP	69 Shore A	black
4060 007 0038	plate fastening	7	11	10	14	6.2	2	–	2	4.2	EPDM-X+PP	93 Shore A	black
4069 011 0801	plate fastening	8	22	18	25	10.9	2	–	5.5	3.4	EPDM-X+PP	69 Shore A	black
4060 060 3018	plate fastening	8	22	18	25	7.9	2	–	2.5	3.4	EPDM-X+PP	78 Shore A	black
4060 010 0069	plate fastening	10	21.5	18	25	10.9	2 – 3	–	3.5	6	EPDM-X+PP	69 Shore A	black
4069 010 0029	plate fastening	10	21.5	18	25	10.9	2 – 3	–	3.5	6	EPDM-X+PP	78 Shore A	black
4060 010 0070	plate fastening	10	21.5	16 – 18.5	25	10.9	2 – 3	–	3.5	6	EPDM-X+PP	86 Shore A	black
4060 010 0008	plate fastening	10	25.5	22	32	16	3	–	7	6	EPDM-X+PP	78 Shore A	black
4060 015 0009	plate fastening	15	31.5	27	34	16	3 – 3.5	–	5.2	8	EPDM-X+PP	78 Shore A	black
4250 015 0001	plate fastening	15	37	33	38	13.5	2 – 2.5	–	3.5	8	EPDM-X+PP	69 Shore A	black

**Sales@RivetNutUSA.com**

Request your quote with Rivet Nut USA (an operating division of Cardinal Components, Inc.)  
Cardinal Components, Inc. is your authorized preferred specialty fastener distributor.

**ISO 9001 CERTIFIED**  
**www.RivetNutUSA.com**  
**(800) 236-3200**

**Sales@RivetNutUSA.com**

Request your quote with Rivet Nut USA (an operating division of Cardinal Components, Inc.)  
Cardinal Components, Inc. is your authorized preferred specialty fastener distributor.

**ISO 9001 CERTIFIED**  
**www.RivetNutUSA.com**  
**(800) 236-3200**

**SNAPLOC®** Technical information

**Couplings for plate fastening**  
High temperature applications



Part number	Design	Ball Ø D	Outer Ø d2	Mounting hole Ø d3	Collar Ø d4	Depth (to ball center L1)	Wall thickness L2	Mounted depth L3	Collar depth L4	Depth L5	Material	Shore hardness	Thread surface
4289 023 0701	plate fastening	7	12.4	10	16	8	1 – 2	–	1.5	5.2	TPE-E	33 Shore D	black
4059 007 0010	plate fastening	7	16.5	14	20	8	2 – 2.5	–	3.5	2	ECO according to TL 52052	60 Shore A	black
4059 008 0083	plate fastening	8	18.5	16	26	10.5	2 – 2.5	–	3.5	4.6	VMQ	50 Shore A	grey
4059 008 0084	plate fastening	8	18.5	15.4	23	11	3.3	–	6	1.55	VMQ	70 Shore A	grey
4059 010 0082	plate fastening	10	22.5	16	25	11	2.5 – 3.2	–	3.1	6	VMQ	70 Shore A	grey
4059 010 0080	plate fastening	10	21.5	16	25	10.9	2 – 3	–	3.5	6	EPDM peroxide	65 Shore A	black
4059 010 0081	plate fastening	10	21.5	16	25	10.9	2 – 3	–	3.5	6	EPDM peroxide	70 Shore A	black
4059 010 0079	plate fastening	10	16.5	14	20	7.5	2 – 2.5	–	3.5	3.2	EPDM peroxide	70 Shore A	black

**Sales@RivetNutUSA.com**

*Request your quote with Rivet Nut USA (an operating division of Cardinal Components, Inc.)*

*Cardinal Components, Inc. is your authorized preferred specialty fastener distributor.*

**ISO 9001 CERTIFIED**  
**www.RivetNutUSA.com**  
**(800) 236-3200**

**Sales@RivetNutUSA.com**

*Request your quote with Rivet Nut USA (an operating division of Cardinal Components, Inc.)*

*Cardinal Components, Inc. is your authorized preferred specialty fastener distributor.*

**ISO 9001 CERTIFIED**  
**www.RivetNutUSA.com**  
**(800) 236-3200**