



Exceptional  
Customer  
Service

Same Day  
Shipping

Easy  
Fastening  
Solutions

Repair & Service  
Tools / Rentals

Tools & Parts  
In Stock

## FLEXITOL® Eco

Tolerance compensation system

# BÖLLHOFF



**Sales@RivetNutUSA.com**

*Request your quote with Rivet Nut USA (an operating division of Cardinal Components, Inc.)  
Cardinal Components, Inc. is your authorized preferred specialty fastener distributor.*

**ISO 9001 CERTIFIED**  
**www.RivetNutUSA.com**  
**(800) 236-3200**

# FLEXITOL® Eco Tolerance compensation system

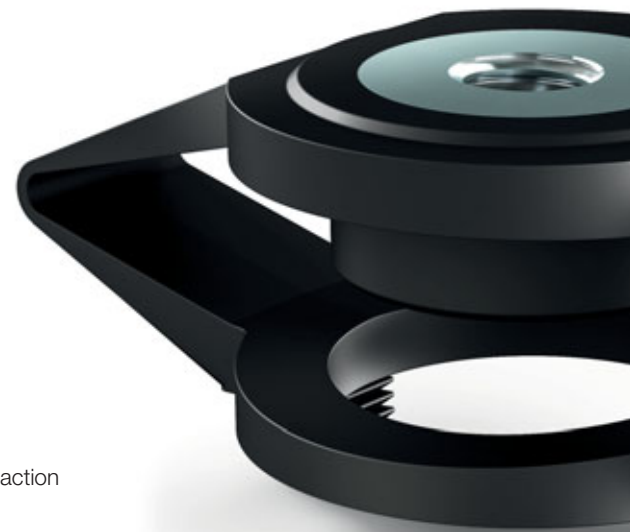
The new FLEXITOL® Eco is another highlight in our established portfolio of tolerance compensation systems. With its intelligent design, this new development allows the cost-effective compensation of tolerances.

## Function

The tolerance compensation fastener consists of a plastic cage with an in-moulded metal nut.

The tolerance compensation already takes place during installation when the plastic cage is compressed and automatically adapts to the respectively required tolerance compensation measure. No further adjustment process is necessary.

Due to the clip geometry in the bottom part of the plastic overmoulding, the fastener can also be pre-assembled and does not disassemble during transport.



## Your advantages – an overview

- High performance reliability due to the simple principle of action
- Cost-effective tolerance compensation fastener
- Reduced weight
- Pre-assembly possible



FLEXITOL® Eco – the one-piece tolerance compensation system



Clipping-in and engagement of the fastening geometry



a) Positioning of the components  
b) Axial tolerance compensation through compression of the FLEXITOL® Eco

**Sales@RivetNutUSA.com**

*Request your quote with Rivet Nut USA (an operating division of Cardinal Components, Inc.)  
Cardinal Components, Inc. is your authorized preferred specialty fastener distributor.*

**ISO 9001 CERTIFIED**  
**www.RivetNutUSA.com**  
**(800) 236-3200**

#### Technical data – an overview

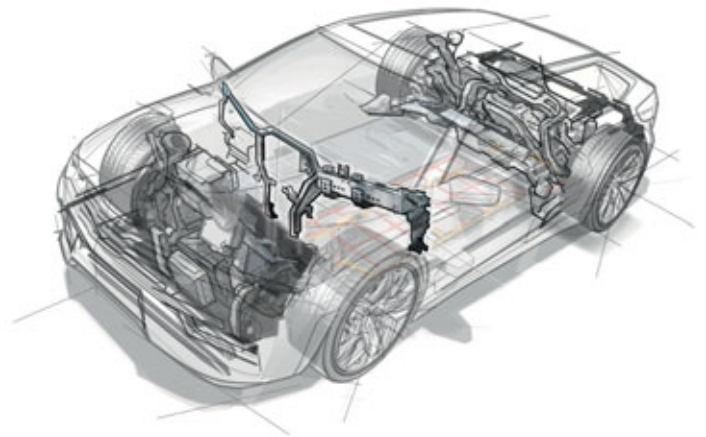
- Axial tolerance compensation: 7 mm max.
- Radial tolerance compensation:  $\pm 1.8$  mm
- Variable thread sizes (M 6 / M 8 / M 10)
- Tightening torque according to property class 8.8
- Recommended screw length: 22 mm min. plus sheet metal thickness

#### Example of application

The fastener can be used to fasten dash panels inside vehicle bodies.

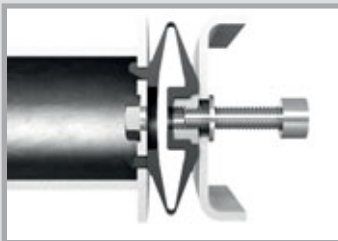
Usually, no more than two or three FLEXITOL® Eco fasteners are required for the installation. The dash panel can be mounted to the firewall as well as to the A-pillar of the vehicle.

**You have special requirements? Please do not hesitate to contact us.**

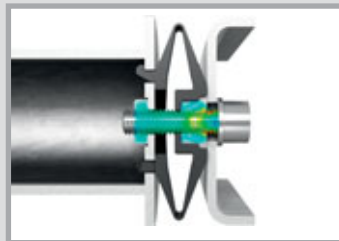


#### Further areas of application

- Mechanical engineering
- Agricultural machinery
- Commercial vehicles
- Rail vehicles



a) Introduction of the screw through the bore hole on the mounting part



b) Subsequent screw fastening through the metal nut in the FLEXITOL® Eco and the nut thread on the component

The tightening torque is reached



FLEXITOL® Eco tolerance compensation installed



<https://www.boellhoff.com/videos/flexitol-eco>

**Sales@RivetNutUSA.com**

*Request your quote with Rivet Nut USA (an operating division of Cardinal Components, Inc.)  
Cardinal Components, Inc. is your authorized preferred specialty fastener distributor.*

**ISO 9001 CERTIFIED**  
**www.RivetNutUSA.com**  
**(800) 236-3200**

# BÖLLHOFF

## Böllhoff Group

Innovative partner for joining technology with assembly and logistics solutions.

Find your local partner at [www.boellhoff.com](http://www.boellhoff.com) or contact us at [fat@boellhoff.com](mailto:fat@boellhoff.com).

**Passion for successful joining.**

Subject to technical change.  
Reprinting, even in extract form, only permitted with express consent.  
Observe protective note according to ISO 16016.



**Sales@RivetNutUSA.com**

*Request your quote with Rivet Nut USA (an operating division of Cardinal Components, Inc.)  
Cardinal Components, Inc. is your authorized preferred specialty fastener distributor.*

**ISO 9001 CERTIFIED**  
**www.RivetNutUSA.com**  
**(800) 236-3200**