



Exceptional  
Customer  
Service

Same Day  
Shipping

Easy  
Fastening  
Solutions

Repair & Service  
Tools / Rentals

Tools & Parts  
In Stock

## KAPTI® Limiter

Riveting compression limiters for plastic components

# BÖLLHOFF



**Sales@RivetNutUSA.com**

*Request your quote with Rivet Nut USA (an operating division of Cardinal Components, Inc.)  
Cardinal Components, Inc. is your authorized preferred specialty fastener distributor.*

**ISO 9001 CERTIFIED**  
**www.RivetNutUSA.com**  
**(800) 236-3200**

# KAPTI® Limiter – Compression limiter

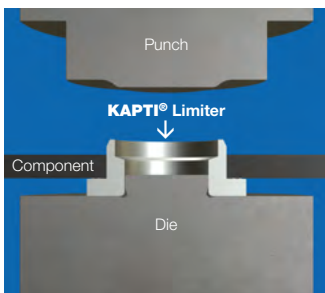


The KAPTI® Limiter is a threadless rivet sleeve that has been specially developed to protect plastic components from cracking and creeping under increased preload. It ensures a permanent form fit between the element and the carrier component, effectively absorbing and maintaining the preload force. The KAPTI® Limiter can be installed in various plastic components and offers the flexibility to use the same element geometry for different component thicknesses. This clearly sets it apart from conventional press-fit compression limiters and protects the component from damage.

## Your advantages

- **Component protection:** Effectively protects against cracking in the component by absorbing the compressive stresses during screw fastening.
- **Preload force protection:** Prevents the plastic from creeping and thus secures the preload force permanently.
- **Flexibility:** One element for different component thicknesses enables flexible design.
- **Precision:** Enables precise spacing between components (see page 3, installation example on the right).
- **Two-sided:** The screw can be inserted on both sides, which makes installation easier.
- **Tightness:** The sealing lips ensure a media-tight connection.
- **Cost-effectiveness:** Press-integrated processing enables cost-efficient production.
- **Environmentally friendly:** Mechanical fastening without heat input preserves material integrity and is energy efficient.

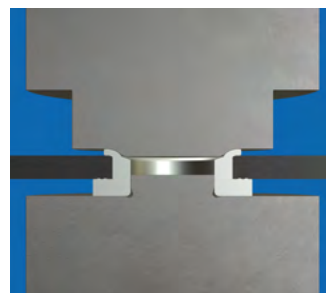
## Joining process



The KAPTI® Limiter and the plastic component are positioned on the die of the riveting tool.



Closing the tool and placing the punch on the shaft end of the KAPTI® Limiter. Start of the forming process.



Flanging the end of the shaft to create a form-fit joint between the KAPTI® Limiter and the component. Forming the sealing lips into the plastic.



Retracting the stamp and removal of the composite from the KAPTI® Limiter and the component.



<https://www.boellhoff.com/video/kapti-limiter>

**Sales@RivetNutUSA.com**

Request your quote with Rivet Nut USA (an operating division of Cardinal Components, Inc.)  
Cardinal Components, Inc. is your authorized preferred specialty fastener distributor.

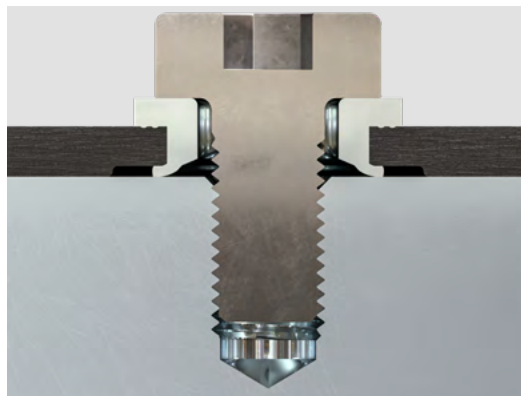
**ISO 9001 CERTIFIED**  
**www.RivetNutUSA.com**  
**(800) 236-3200**

# KAPTI® Limiter – Compression limiter

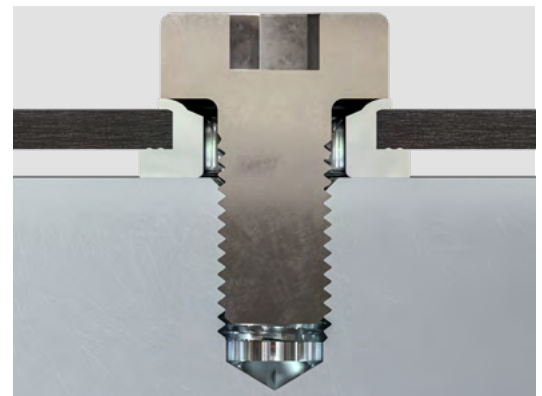


- **Forming section:** The principle of riveting enables a tolerance compensation regarding the component thickness – one element geometry for different component thicknesses.
- **Sealing lips (under head):** Creation of a media-tight joint between the KAPTI® Limiter and the plastic component.
- **Flange:** Contact surface between screw and KAPTI® Limiter. Absorption of compressive stresses with defined preload force (see installation example on the left). In the case of shaft-sided bolting, a defined distance between the plastic component and the partner component can be created via the thickness of the flange (spacer, see installation example on the right).

## Installation examples

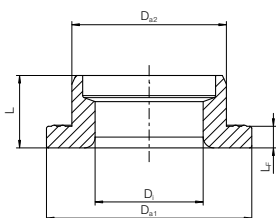


The plastic component and the feet of the KAPTI® Limiter lie flush on the partner component, whereby the preload force is absorbed via the element.



The reverse joining direction of the KAPTI® Limiter enables a defined gap between the plastic and partner component.

## Characteristic values



Variant	L mm	L <sub>F</sub> mm	D <sub>i</sub> mm	D <sub>a1</sub> mm	D <sub>a2</sub> mm	Material thickness mm	Protection class*
Ø19 (suitable for M6, M8)	6.7	2	10.0	19	14.3	2.7 – 3.5	min. IPX7
Ø22 (suitable for M10)	6.7	2	14.2	22	18.0	2.7 – 3.5	min. IPX7

\* The tightness between the KAPTI® Limiter and the carrier component (PA6.6 30GF) was checked by a three-hour test with a 1-meter water column.

The table shows characteristic values of two exemplary KAPTI® Limiter variants. Other performance characteristics, such as the maximum preload force at which defined creep of the plastic begins, can be recorded for specific applications. **Special versions on request.**

**Sales@RivetNutUSA.com**

Request your quote with Rivet Nut USA (an operating division of Cardinal Components, Inc.)  
Cardinal Components, Inc. is your authorized preferred specialty fastener distributor.

**ISO 9001 CERTIFIED**  
**www.RivetNutUSA.com**  
**(800) 236-3200**

# BÖLLHOFF

Passion for successful joining.

## Böllhoff Group

Competence leader in 360° Joining Technology

Find your local partner at [www.boellhoff.com](http://www.boellhoff.com) or contact us at [fat@boellhoff.com](mailto:fat@boellhoff.com).

Subject to technical change.  
Reprinting, even in extract form, only permitted with express consent.  
Observe protective note according to ISO 16016.



**Sales@RivetNutUSA.com**

*Request your quote with Rivet Nut USA (an operating division of Cardinal Components, Inc.)  
Cardinal Components, Inc. is your authorized preferred specialty fastener distributor.*

**ISO 9001 CERTIFIED**  
**www.RivetNutUSA.com**  
**(800) 236-3200**